

DATA JOURNEYS



The 'Data Journeys' methodology helps people to understand how societal and organisational cultures, public policies and economic issues come together to shape how data move or not between teams, organisations and sectors.

It can be used to gain a deeper understanding of why data sharing challenges persist despite changes in organisational policy, or where and why confidential data leakage may be a risk as data travels between different people and systems.

This 5-step guide offers practical steps for applying the 'Data Journeys' methodology in any context, from Smart Cities to weather data or the health sector. It is based on peer-reviewed research published by the team in the journal *Big Data and Society* (<http://bit.ly/DataJourneys>).



Want to apply this methodology?


If you're interested in applying this methodology, but lack the time and resources, contact the research team to explore possible collaboration opportunities by emailing **Dr Jo Bates**, jo.bates@sheffield.ac.uk. The team are currently using this methodology in projects examining data flows in the health sector and Smart Cities initiatives in China and the UK.


If you use Data Journeys in your own work, please cite this leaflet using the citation below!

Useful resources

See Data Journeys in action in the team's research on meteorological data flows: www.lifeofdata.org.uk

Open source codebase for Wordpress installation to develop your own Data Journey website:
<https://github.com/lifeofdata/lifeofdata-website>


 This leaflet was created by Research Retold www.researchretold.com

 The research underlying this work was developed on an AHRC funded project: The Secret Life of a Weather Datum. Grant no.: AH/L009978/1.

Citation

If you use this work please add the following citation to your content:
J. Bates, P. Goodale, Y. Lin, P. Andrews in collaboration with M. Gruija and R. Metodieva from Research Retold (www.researchretold.com), 2017.
Data Journeys. DOI: 10.15131/shef.data.5065552

Licensing

This work is licensed under a Creative Commons
Attribution-NonCommercial-ShareAlike 4.0 International License:
<https://creativecommons.org/licenses/by-nc-sa/4.0/> 



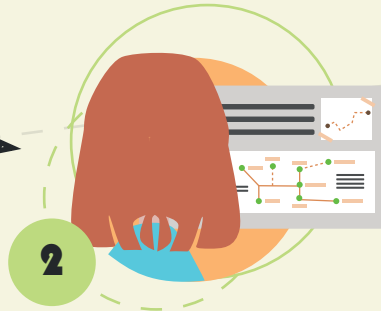
Information
School

www.shef.ac.uk/is
A member of the
Schools network





1 Identify the data you want to follow
e.g. air pollution readings taken from sensors in Sheffield



2 Map the journey of the data
from when it is initially produced to sites where it is processed and used in different teams or organisations



3 Identify potential data movement challenges across your map
i.e. places where data moves too freely or not enough between different people



4 Identify where you need a deeper understanding of the data movement challenge
then through face to face discussion, shadowing and reading, develop your understanding of what shapes and frustrates data movement:

- policy, legislation and systems
- perceived pros and cons for different people, organisations etc
- organisational dynamics
- external pressures related to wider social context



5 Decide whether and how the data movement issue should be addressed
using your newly acquired knowledge, and in collaboration with any stakeholders who will be impacted by the change